



# User Manual

**FERREX<sup>®</sup>**

## 20 V LI-ION CORDLESS GRASS TRIMMER

**FAR 20-1a**

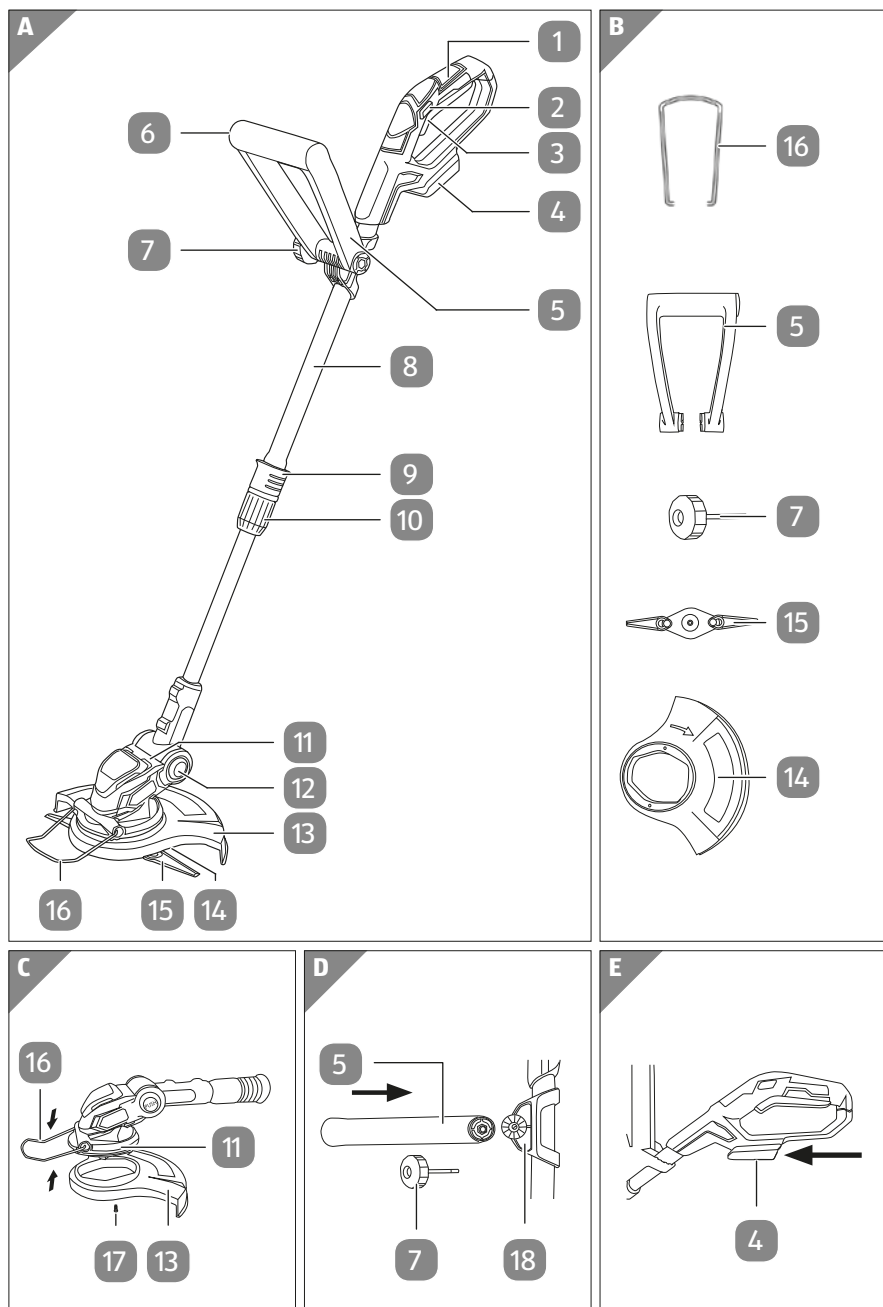


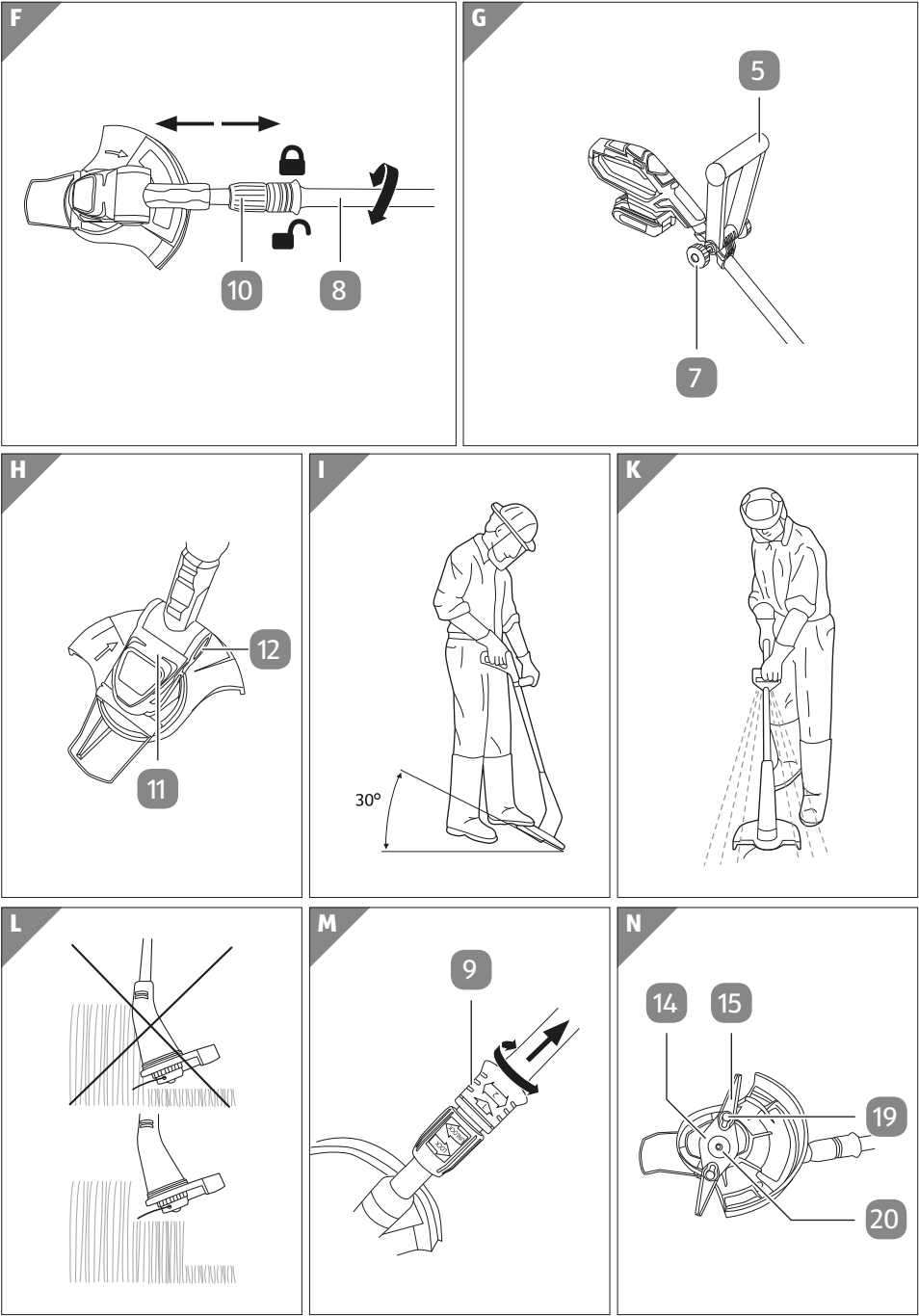
**Original instructions**

# Table of contents

<b>Scope of delivery</b> .....	<b>3</b>
Components .....	5
<b>General information</b> .....	<b>6</b>
Reading and storing the user manual .....	6
Proper use .....	6
Residual risks.....	7
Explanation of symbols .....	8
<b>Safety</b> .....	<b>9</b>
Explanation of notes .....	9
General power tool safety instructions.....	9
Special safety instructions for cordless tools .....	10
Special safety instructions for the grass trimmer .....	10
Supplementary safety instructions.....	12
<b>Before first use</b> .....	<b>16</b>
Checking the grass trimmer and package contents .....	16
Assembling the protective cover, plant guard / cutting width indicator and nylon blade.....	16
Assembling the additional handle .....	17
Using the battery .....	17
<b>Use</b> .....	<b>18</b>
Adjusting the height of the guide bar .....	18
Adjusting the additional handle .....	19
Setting the inclination angle .....	19
Using the grass trimmer .....	20
Using the grass trimmer as an edger .....	21
After use .....	21
<b>Cleaning and maintenance</b> .....	<b>22</b>
Cleaning the grass trimmer .....	23
Replacing the nylon blade .....	23
Inspecting the grass trimmer .....	24
<b>Storage</b> .....	<b>24</b>
<b>Transport</b> .....	<b>24</b>
<b>Troubleshooting</b> .....	<b>24</b>
<b>Spare parts list</b> .....	<b>25</b>
<b>Technical data</b> .....	<b>25</b>
Important specifications for the grass trimmer .....	25
Important specifications for the battery and charger .....	25
<b>Noise/vibration information</b> .....	<b>26</b>
<b>Disposal</b> .....	<b>28</b>
Disposing of the packaging .....	28
Disposing of the grass trimmer .....	28
<b>Declaration of Conformity</b> .....	<b>29</b>

# Scope of delivery





# Declaration of Conformity



Conmetall Meister GmbH  
Oberkamper Straße 37 - 39  
42349 Wuppertal  
Germany



## EC Declaration of Conformity

We declare with sole responsibility,  
that the product listed below ...

20 V LI-ION CORDLESS GRASS TRIMMER  
FAR 20-1a

### FERREX®

WU5420333 / WU5420334 • 800322 • 04/2020

... meets all of the requirements  
of the listed directives.

2011/65/EU (RoHS)  
2006/42/EC (MD)  
2014/30/EU (EMC)  
2005/88/EC (ND)

Applied, harmonized standards:

EN 60335-1:2012+A11:2014+A13:2017  
EN 50636-2-91:2014  
EN 55014-1:2017  
EN 55014-2:2015  
EN 50581:2012

Wuppertal, .....01.10.2019

Ingo Heimann (M.Sc.)  
Technical direction/Product development  
Conmetall Meister GmbH · Oberkamper Straße 37 - 39 · 42349 Wuppertal · Germany  
Authorized person for storing the technical documentation.

## Components

- |   |   |
|---|---|
| 1 Additional handle                           | 11 Motor housing  |
| 2 Switch lock                                 | 12 Locking mechanism<br>(cutting angle, four positions) |
| 3 On/Off switch                               | 13 Protective cover                                     |
| 4 Battery compartment                         | 14 Nylon blade mount                                    |
| 5 Secondary handle                            | 15 Nylon blade, 22×                                     |
| 6 Blade holder                                | 16 Plant guard / cutting width indicator                |
| 7 Tensioning screw (additional handle)        | 17 Screw, 2×  |
| 8 Telescopic guide bar                        | 18 Bracket (additional handle)                          |
| 9 Locking mechanism<br>(motor swivel 90/180°) | 19 Locating bolt (nylon blade), 2×                      |
| 10 Locking mechanism (telescope)              | 20 Fixing screw (nylon blade mount)                     |

# General information

## Reading and storing the user manual



This user manual comes with the 20 V Li-Ion Cordless Grass Trimmer FAR 20-1a (hereinafter referred to simply as “grass trimmer”). It contains important information on safety, usage and care.

Read this user manual carefully before operating the grass trimmer. Pay particular attention to the safety notes and warnings. Failure to comply with the instructions in this user manual may result in serious injury or damage to the grass trimmer.

Observe all applicable local or national regulations regarding the use of this grass trimmer. Keep this user manual in a safe place for future reference. If you pass the grass trimmer on to third parties, this user manual must be included.

This user manual can be downloaded in PDF format from our website [www.conmetallmeister.de](http://www.conmetallmeister.de).

## Proper use

The grass trimmer is only designed for cutting lawns and small grassy areas. It is intended exclusively for private use, such as by hobby gardeners or DIY enthusiasts, and is not suitable for commercial use, including garden maintenance work at public facilities, parks, sports centres, on roads or in agricultural and forested areas.

This grass trimmer does not include a rechargeable battery or charger, which must be purchased separately. The grass trimmer can be operated with the 20 V battery or with the 20/40 V battery available from Activ Energy®.

Use only the rechargeable batteries listed in the chapter “Technical data” for this grass trimmer, and do not operate the grass trimmer using rechargeable batteries supplied by other manufacturers.

Use the grass trimmer only as described in this user manual. Any other applications are expressly prohibited and are deemed improper use.

Neither the manufacturer nor the retailer can accept any responsibility for injury, loss or damage caused by misuse of this product of any kind. Examples of misuse are given in the following non-exhaustive list:

- Using the grass trimmer for other than the intended purposes;
- Failure to observe the safety notes and warnings as well as the assembly, operating, maintenance and cleaning instructions contained in this user manual;
- Failure to comply with any regulations relating to accident prevention, occupational medicine or safety, which specifically and/or generally apply to the use of the grass trimmer;
- Use of accessories and spare parts not intended for the grass trimmer;

- Modifications to the grass trimmer;
- Repairs of the grass trimmer performed by parties other than the manufacturer or a qualified professional;
- use of the grass trimmer for commercial or industrial applications as well as in connection with the trade professions;
- Operation or maintenance of the grass trimmer by persons not familiar with how to handle the grass trimmer and/or who are not aware of the related risks.

## Residual risks

**Despite proper use, inconspicuous residual risks cannot be completely ruled out. The following risks may arise due to the nature of the grass trimmer:**

- Injury and damage to property caused by projected parts.
- Lung injury if a suitable dust mask is not worn.
- Hearing damage if the grass trimmer is used for prolonged periods without suitable ear protection.
- Impaired health attributed to hand-arm vibration emissions if the grass trimmer is used over a prolonged period or is not guided and maintained properly.
- Cutting injuries can also occur if suitable protective clothing is not worn.



**Warning!** This power tool generates an electromagnetic field during operation. Under certain circumstances, this field may affect active or passive medical implants. To reduce the risk of serious or fatal injury, we recommend persons with medical implants to consult their physician and the manufacturer of the medical implant before using the machine!



## Explanation of symbols

The following symbols and signal words are used in this user manual, on the grass trimmer or on the packaging.



Declaration of Conformity (see “Declaration of Conformity” chapter):  
Products marked with this symbol meet all applicable Community regulations for the European Economic Area.



Read the user manual.



Attention!



This grass trimmer complies with protection class III.



Wear protective goggles and hearing protection.



Protect the grass trimmer against moisture. Do not use the grass trimmer in the rain or for wet grass.



Warning: maintain a safe distance from the garden tool when it is in operation.



Maintain adequate distance from other persons, particularly children and animals. Pay attention to flying parts.



Attention! The grass trimmer continues to run.



The cutting diameter amounts to 260 mm.



Guaranteed sound power level 96 dB.

# Safety

## Explanation of notes

The following symbols and signal words are used in this user manual.



Indicates a hazardous situation that, if not avoided, could result in death or serious injury.

**NOTICE!**

Warns against potential damages to property.



This symbol provides you with useful supplementary information on assembly or operation.

## General power tool safety instructions

### **⚠ WARNING Read all safety instructions and instructions.**

*Failure to follow the safety instructions and guidance may result in an electric shock, fire and/or severe injury.*

*The term “grass trimmer” as it appears in these safety instructions refers to the mains-powered grass trimmer (with mains cord) and to the battery-powered grass trimmer (without mains cord).*

- a) Protect the electric parts against moisture.  
While cleaning and operating, never dip them in water or other liquids to avoid an electric shock. Never hold the grass trimmer under running water.
- b) Switch off the grass trimmer, remove the battery and allow the grass trimmer to cool down before carrying out any assembly, conversion, cleaning or maintenance work, or before storing or transporting the grass trimmer.
- c) Switch off the grass trimmer and remove the battery before replacing any accessories, before cleaning it, or when it is not in use.

## Special safety instructions for cordless tools

- a) **Charge the rechargeable batteries only in chargers recommended by the manufacturer.** *Chargers that are only suitable for certain rechargeable battery types pose a risk of fire if used with other rechargeable batteries. Only use the rechargeable batteries designated for use in power tools. Using other rechargeable batteries may result in injury and a risk of fire.*
- b) **Keep the unused rechargeable battery away from paper clips, coins, keys, nails, screws or other small metallic objects that could bridge the contacts.** *A short circuit between the contacts of the rechargeable battery could result in burns or fire.*

## Special safety instructions for the grass trimmer

### IMPORTANT

### READ CAREFULLY BEFORE USE

### KEEP FOR YOUR RECORDS

## Training

- a) Read through the instructions carefully. Be sure to familiarise yourself with the grass trimmer's controls and its proper use.
- b) Never allow children or adults unfamiliar with these instructions to use the grass trimmer. Applicable local regulations may restrict the age of the user.
- c) It must be noted that the user will be held responsible for accidents or risks to other persons or their property.

## Preparation

- a) Before being used the grass trimmer should be inspected visually for any damage, missing or improperly installed protectors or guards.
- b) Never operate the grass trimmer where there are persons, especially children, or pets in the vicinity.
- c) Carefully check the terrain where you are using the grass trimmer and remove any objects that may get caught in the grass trimmer and become projectiles.

- d) Before switching on the grass trimmer, always check that all screws, nuts, bolts and other fixings are both tight and secure.

## Operation

- a) Eye protection and sturdy footwear must be worn at all times when using the grass trimmer.
- b) Using the grass trimmer in bad weather, and especially when there is a risk of lightning, should be avoided.
- c) Use the grass trimmer only during daylight or under sufficient artificial lighting.
- d) Always assume a stable stance with proper posture, especially when working on slopes.
- e) Walk, do not run.
- f) Never use the grass trimmer if its covers or protective equipment are either damaged or missing.
- g) Switch the motor on only if your hands and feet are out of the reach of the cutting unit.
- h) Make sure that the vents are kept free of debris.
- i) Be cautious to prevent injuries to the hands and feet caused by the cutting unit.
- j) Use the grass trimmer only in the recommended way and only on a firm and flat surface.
- k) Do not operate the grass trimmer on paved or gravelled areas where projectile debris could cause injury.
- l) Always disconnect the grass trimmer from the power supply by taking out the removable battery in the following situations:
  - If you leave the grass trimmer unattended.
  - Before removing a blockage.
  - Before checking, cleaning and conducting any maintenance work on the grass trimmer.
  - After contact with debris.
  - If the grass trimmer begins to vibrate abnormally.

## **Maintenance and storage**

- a) Before any servicing or cleaning always disconnect the grass trimmer from the power supply by taking out the removable battery.
- b) Only the spare parts and accessories recommended by the manufacturer are to be used.
- c) The grass trimmer must be checked and serviced at regular intervals. Have the grass trimmer repaired by an authorised technician only.
- d) If the grass trimmer is not in use, keep it out of reach of children.

## **Supplementary safety instructions**



### **Risk of injury and electric shock!**

Any improper handling of the grass trimmer may lead to electric shock and serious injury.

- Do not operate the grass trimmer if it shows visible signs of damage.
- Keep the area you intend to trim free of cables and hard objects.
- Familiarise yourself with the control equipment and proper use of the grass trimmer.
- Do not use the grass trimmer in the rain or in a damp, wet environment.
- Do not submerge the grass trimmer, its battery or charger in water or other liquids.
- Make sure that children do not insert any objects into the grass trimmer.
- If you are not using the grass trimmer, if you are cleaning it or if a malfunction occurs, always switch off the grass trimmer and remove the battery.

**WARNING!****Risk of injury!**

Any improper handling of the battery and charger or the use of any inappropriate devices may result in injury.

- Ensure that the grass trimmer is operated solely with one of the batteries listed in the chapter “Technical data”.
- Before using the grass trimmer, read the user manual and the information on how to use the battery and charger.
- Do not store the grass trimmer with the battery inserted in locations where the ambient temperature can reach 40°C, especially in a parked car in direct sunlight.

**WARNING!****Risk of injury!**

Improper use of the grass trimmer may result in injury.

- Make sure that no stones or other hard objects touch the cutting unit when you switch the grass trimmer on.
- Only switch the grass trimmer on if you hold it perpendicular to the ground and in the correct working position. Keep it away from your body.
- Do not switch the grass trimmer on if it has been flipped over and is not in the working position.
- Do not operate the grass trimmer near people, particularly children or pets.  
Maintain a distance of at least 5 m.
- Do not cut any hard objects. The edge of the protective cover serves to keep the grass trimmer away from walls, hard surfaces and fragile objects.
- Never use the grass trimmer without the protective cover. Using the grass trimmer without the protective cover voids your warranty claim.

- Keep your hands and feet away from the cutting unit when you switch the motor on.
- Never stop the cutting unit with your hands. Wait until it stops by itself.
- Cut only grass growing on soil. Do not cut grass growing on walls, rocks or similar.
- Always wear secure footwear, long trousers, work gloves, protective goggles and a hard hat when using the grass trimmer.
- Hold the grass trimmer firmly, but not tensely by the designated handles.
- Make sure that you have a stable stance and straight posture. Be careful when walking backwards.
- If the grass trimmer vibrates abnormally, turn it off immediately and remove the battery. Make sure that all parts are in sound condition and secure. Stop using the grass trimmer if it is damaged and have qualified personnel perform repairs.
- Always switch the grass trimmer off when you stop work in order to get to a new work area and when crossing gravel paths or roads.  
The cutting unit will continue to rotate for a few seconds. Always wait until the cutting tool has come to a standstill before you transport the grass trimmer.



**Danger for children and persons with impaired physical, sensory or mental capacities (e.g. partially disabled persons, older persons with reduced physical and mental capacities) or persons with a lack of experience and knowledge (e.g. older children).**

- This grass trimmer must not be used by children.
- This grass trimmer must not be used by individuals with a reduced physical, sensory or mental capacity, or who lack the appropriate experience and knowledge.

- Children must not be allowed to play with the grass trimmer. Cleaning and user maintenance must not be performed by children.
- Keep children away from the grass trimmer and its charger.
- Do not leave the grass trimmer unattended while it is in operation.
- Do not let children play with the packaging. Children may get caught in it when playing and suffocate.

### **NOTICE!**

#### **Risk of damage!**

Any incorrect handling of the grass trimmer can cause damage to property and damage to the grass trimmer itself. The operator is responsible for accidents involving other persons or their property.

- Perform a visual check before and after each use. Do not use the grass trimmer if its safety devices are damaged.
- Check the material to be cut before you start work. Remove any debris that is present. Look out for debris while working. Should foreign objects enter the grass trimmer during cutting, turn the grass trimmer off, take out its battery and remove the foreign object.
- Keep the vents free of dirt.
- Use original spare parts only.
- Remove the battery from the battery compartment when it is fully discharged, or when not using the grass trimmer for a prolonged time. This helps to avoid damage that may be caused by battery acid leaking out.
- Protect the grass trimmer against moisture and rain.
- Keep the grass trimmer away from naked flames and hot surfaces.



## Before first use

### Checking the grass trimmer and package contents

1. Lift the grass trimmer out of the packaging with both hands.
2. Place the grass trimmer on a level, stable base, e.g. on a workbench.
3. Check that all parts are included in the delivery (see **Fig. A and B**).
4. Check whether the grass trimmer or the individual parts exhibit damage. If this is the case, do not use the grass trimmer. Contact the manufacturer at the service address specified on the warranty card.
5. Whenever possible, retain the original packaging for the grass trimmer for storage purposes and for future reference.

### Assembling the protective cover, plant guard / cutting width indicator and nylon blade

1. Unscrew, anticlockwise, the fixing screw **20** of the nylon blade mount **14** on the underside of the motor housing **11** (see **Fig. N**).
2. Remove the nylon blade mount, the fastening screw and the associated snap ring from the grass trimmer.
3. Loosen the two screws **17** on the underside of the motor housing by unscrewing them, anti-clockwise (see **Fig. C**).
4. Attach the protective cover to the motor housing from below.
5. Secure the protective cover by passing the two previously removed screws through the corresponding holes in the protective cover, and screwing them back in, in a clockwise direction.
6. Check that the protective cover is securely fastened.
7. Attach the nylon blade mount to the motor housing using the fixing screw that was previously removed.
8. Insert a nylon blade **15** with the larger opening over the head of a locating bolt **19** (see **Fig. N**).
9. Twist the nylon blade onto the locating bolt until the nose on the blunt end of the nylon blade engages with the corresponding groove on the nylon blade mount.
10. Carefully pull on the nylon blade so that the locating bolt snaps into the small opening of the nylon blade.
11. Turn the nylon blade on the locating bolt in both directions, to check its correct fit: The nose of the nylon blade must run through the designated guide groove of the nylon blade mount.
12. To attach the second nylon blade, repeat steps 8-11.

13. Insert the plant guard / cutting width indicator **16** into the designated holes on the motor housing (see **Fig. C**).

## Cutting width indicator / plant guard

The guard **16** located on the front of the grass trimmer serves both as a plant guard and as a cutting width indicator. The cutting blade only moves within the length of the folded-down guard. Users have the option, however, of using the grass trimmer with the guard folded up.

## Assembling the additional handle

1. Insert the additional handle **5** into the bracket **18**.  
The toothing of the holder and the additional handle must interlock with one another (see **Fig. D**).
2. Insert the tensioning screw **7** through the hole in the bracket and the additional handle and tighten it.
3. Tighten the tensioning screw.
4. Check that the additional handle is tightened properly.

## Using the battery



This grass trimmer does not come with a battery.

- Use only the rechargeable batteries listed in the chapter “Technical data” for this grass trimmer, and do not operate the grass trimmer using rechargeable batteries supplied by other manufacturers.
- In addition to this user manual, observe the accompanying user manuals for the battery pack and charger.

## Inserting and removing the battery

- To insert the battery, press the battery-release button on the battery and slide the battery into the battery compartment **4** on the handle **1** (see **Fig. E**).  
The battery audibly locks into place.
- To remove the battery, press the battery-release button and pull the battery out of the battery compartment.

## Charging the rechargeable battery



- Charge the battery in good time, to increase its service life.
- Charge the battery no later than when you notice that the grass trimmer's performance is diminishing.
- When charging the battery, follow the operating instructions in the user manual for the battery pack and the charger.

## Use



### Risk of injury!

Improper handling of the grass trimmer may result in injury.

- Check the grass trimmer for damage before you use it.
- Never use the grass trimmer if the protective cover is missing or damaged.
- When you switch the grass trimmer off, the cutting unit will continue to rotate for a few seconds.

Wait until the cutting unit has come to a complete stop before you transport, maintain or store the grass trimmer.

### NOTICE!

### Risk of damage!

Improper handling of the grass trimmer can damage it.

- To avoid unnecessary wear and tear, use the plant guard / cutting width indicator and protective cover.
- Do not cut wet grass.
- Keep the grass trimmer away from hard objects. To prevent unnecessary wear and tear, avoid cutting hard objects.

## Adjusting the height of the guide bar

To ensure an optimal working position, adjust the height of the telescopic guide bar **8** as necessary.

1. Place the grass trimmer on the ground.
2. Open the locking mechanism **10** for the telescopic guide bar (see **Fig. F**).
3. Pull the guide bar to the desired height.
4. Close the locking mechanism.

## Adjusting the additional handle

To ensure an optimal working position, adjust the additional handle **5** on the grass trimmer as necessary. Always ensure that the teeth on the additional handle and the bracket **18** are properly engaged, and that the additional handle is firmly fixed in place.

1. Place the grass trimmer on the ground.
2. Loosen the tension screw **7** of the additional handle (see **Fig. G**).
3. Set the desired position for the additional handle.
4. Re-tighten the tension screw for the additional handle.

## Setting the inclination angle



### Risk of injury!

If the taper angle of the motor housing is set incorrectly, injury or damage to the grass trimmer may result.

- Use the grass trimmer only if the motor housing and the button have locked into one of the four positions for the inclination angle and the motor housing is securely in place.
- Do not use the grass trimmer if the motor housing is not correctly set to one of the designated positions.

You can adjust the taper angle to four different positions.

Set the taper angle as follows:

1. Press the locking mechanism **12** on the motor housing **11** and keep it pressed down (see **Fig. H**).
2. Set the desired inclination angle.
3. Release the locking mechanism, allowing the motor housing to snap back into place.
4. Turn the motor housing a little further to check that the locking mechanism has clicked into place.

## Using the grass trimmer



### Risk of injury and damage!

If grass, stones, hard objects or similar items are blocking the cutting apparatus, injury or damage to the grass trimmer may result.

- If grass, stones, hard objects or similar items must be removed from the cutting apparatus, immediately switch off the grass trimmer and remove the battery.
- Wait until the cutting unit has come to a complete stop, then carefully remove the debris.
- Wear protective gloves for this.



Approach the grass with the grass trimmer only once the grass trimmer has been switched on.

1. Insert the battery into the grass trimmer as described in the chapter “Inserting and removing the battery”.
2. Switch on the grass trimmer by depressing the on switch **2** into the handle while at the same time pressing the on/off switch **3** (see **Fig. A**). Hold down the On/Off switch.
3. Approach the grass with the grass trimmer.
4. Go forwards and swing the grass trimmer to the side.  
Hold the grass trimmer at an inclined angle of approximately 30° (see **Fig. I** and **K**).
5. Release the On/Off switch to switch off the grass trimmer.
6. Remove the battery from the battery compartment.

### Using it with long grass

- Cut the grass gradually from the top (see **Fig. L**).

## Using the grass trimmer as an edger



### Risk of injury!

Improper use of the grass trimmer may result in injury.

- Always ensure that the motor housing and handle are firmly locked in one of the two available positions and that the locking mechanism is secure.
- Never use the grass trimmer if the motor housing or the handle are in an “intermediate position” and not locked into place.

You can use the grass trimmer to cut the edges of grass and beds.

To do so, proceed as follows:

1. Ensure that the grass trimmer is switched off and remove the battery (see chapter “Inserting and removing the battery”).
2. Pull the locking mechanism **9** for the motor housing **11** upwards (see **Fig. M**).
3. Turn the handle **1** or motor housing respectively as far as it will go to 90° (indicated by the arrows on the locking mechanism).
4. Allow the locking mechanism to re-engage and check that it sits firmly.
5. If necessary, set the inclination angle (see chapter “Setting the inclination angle”).

You have converted the grass trimmer into an edge trimmer and can now perform lawn edge cutting.

### After use

1. Release the On/Off switch **3** to switch off the grass trimmer.
2. Press the battery release button on the battery and remove the battery from the battery compartment **4**.
3. Wait until the cutting unit has come to a stop and let the grass trimmer cool off completely.
4. Carefully remove any grass and foreign bodies from the cutting apparatus and grass trimmer.
5. Clean the grass trimmer as described in the chapter “Cleaning and maintenance”.
6. Check the grass trimmer for any damage and wear.
7. Charge the battery as necessary (see chapter “Charging the battery”).

## Cleaning and maintenance



### **WARNING!**

#### **Risk of injury!**

Accidentally starting the grass trimmer may result in severe injury inflicted by the cutting unit.

- Always remove the battery before cleaning and maintenance.
- Make sure that the grass trimmer has been switched off and the cutting unit has come to a stop.



### **WARNING!**

#### **Risk of injury!**

The grass trimmer is equipped with two nylon blades for cutting. Improper handling can lead to injury.

- Never replace non-metallic cutting tools with metallic cutting tools.

### **NOTICE!**

#### **Risk of damage!**

Improper handling can damage the grass trimmer.

- Do not use any aggressive cleaners, brushes with metal or nylon bristles, or sharp or metallic cleaning utensils such as knives, hard scrapers and the like. They could damage the surfaces.
- Keep the grass trimmer, the protective fixtures and the motor housing free of dust and dirt.
- If possible, clean the grass trimmer after each use.
- Ensure that no water or other liquids can penetrate the motor housing.

## Cleaning the grass trimmer

1. Ensure that the grass trimmer is switched off and remove the battery (see chapter “Inserting and removing the battery”).
2. If applicable, clean the grass trimmer with compressed air and at low pressure.
3. If applicable, remove any coarse deposits on the protective cover **13** with a brush.
4. Clean the motor housing **11** of the grass trimmer with a damp cloth and a small amount of soft soap.
5. Clean the battery with a slightly moist cloth.
6. Rub the grass trimmer and the battery dry with a clean cloth.

## Replacing the nylon blade



Additional nylon blades can be stored in the blade holder **6**.  
The blade holder has a lid which must be screwed on.

1. Ensure that the grass trimmer is switched off and remove the battery (see chapter “Inserting and removing the battery”).
2. Twist the nylon blade to be changed **15** on the locating bolt so that the nose on the blunt end of the nylon blade is positioned in front of the corresponding groove on the nylon blade mount **14** (see **Fig. N**).
3. By applying some pressure, slide the nylon blade out of the locked position on the locating bolt **19** so that the locating bolt passes through the larger opening of the nylon blade.
4. Pass the nylon blade with the larger opening over the head of the locating bolt, to remove it from the locating bolt.
5. Insert a new nylon blade with the larger opening over the head of the locating bolt.
6. Twist the nylon blade onto the locating bolt until the nose on the blunt end of the nylon blade engages with the corresponding groove on the nylon blade mount.
7. Carefully pull on the nylon blade so that the locating bolt snaps into the small opening of the nylon blade.
8. Turn the nylon blade on the locating bolt in both directions, to check its correct fit: The nose of the nylon blade must run through the designated guide groove of the nylon blade mount.



## Inspecting the grass trimmer

Inspect the grass trimmer at regular intervals to ensure it is in good condition. Among other things, check to ensure:

- that the switches are not damaged,
- that the accessories are in proper condition,
- the screw connections are tight,
- the vents are unobstructed and clean. If applicable, use a soft brush to clean them.

**If you identify any damage, you must have it repaired by a specialist workshop to prevent risks.**

## Storage

- Clean the grass trimmer as described in the chapter “Cleaning the grass trimmer”.
- Store the grass trimmer in a dry, dark, frost-free place out of the reach of children. The ideal storage temperature amounts to 5–30 °C.
- Store the grass trimmer in its original packaging.

## Transport

- Grasp the grass trimmer with one hand on the handle **1** and the other hand on the additional handle **5**.
- **Do not carry the grass trimmer by the motor housing **11**.**
- Secure the grass trimmer to prevent it from slipping when transporting it in a vehicle.
- If possible, use the original packaging for transport.

## Troubleshooting

Problem	Possible causes	Solution
The grass trimmer is not running.	The battery is not inserted.	Insert the battery.
The battery does not charge.	The battery is not inserted properly in the charger.	Reinsert the battery into the charger and ensure that the battery clicks audibly into place.
	The mains socket is not working.	Plug the charger into another mains socket.

## Spare parts list

If you order spare parts, you will need the following data:

- Article number: 800322
- Model: FAR 20-Ia
- Model number: WU5420333/WU5420334
- Spare part number: (see the table below)

You can find current prices and information at [www.conmetallmeister.de](http://www.conmetallmeister.de).

Description	Spare part number
Nylon blade	WU2002706

## Technical data

### Important specifications for the grass trimmer

Article number:	800322
Model:	FAR 20-Ia
Model number:	WU5420333/WU5420334
Rated voltage:	20 V===
Cutting capacity:	ø 260 mm
Idle speed $n_0$ :	8,500 min <sup>-1</sup>
Protection class:	III 
Weight:	1.93 kg

### Important specifications for the battery and charger

**Use the product with Activ Energy® batteries and chargers only, in accordance with the following technical specifications:**

#### Suitable for Activ Energy®

<b>Rechargeable battery type:</b>	20 V ===/ 36 Wh/ Li-Ion
<b>Models:</b>	AEB 20-2.0I / AEB 20-2.0N XYZ561
<b>Charging time:</b>	20 V ===/ 36 Wh = approx. 45 min.
<b>Rechargeable battery type:</b>	20 V ===(×2)/ 90 Wh/ Li-Ion
<b>Models:</b>	AEB 2040-2.5I / AEB 2040-2.5N XYZ562
<b>Charging time:</b>	20 V ===(×2)/ 90 Wh = approx. 95 min.

<b>Charger type:</b>	21 V ---/ 4.0 A
<b>Models:</b>	AEC 20-4.0Ia / AEC 20-4.0Ic / AEC 20-4.0Na XYZ563

Please see the technical specifications for the rechargeable battery and charger.

## Noise/vibration information



### Health hazard!

Working without wearing hearing protection or protective clothing can lead to health problems.

- Wear ear protection and suitable protective clothing when working with the device.

Measured in accordance with EN 60335: 1:2012+A11+A13 and EN 50636-2-91: 2014. The noise at your workplace may exceed 85 dB(A); protective measures are necessary in this case (wear suitable ear protection).

- Sound pressure level  $L_{pA}$ : 79 dB(A)
- Sound power level  $L_{WA}$ : 94 dB(A)
- Uncertainty  $K_{pA}$ : 3 dB(A)

The aforementioned values are noise emission values and therefore do not necessarily represent safe values for the workplace. The correlation between emission and emission levels cannot reliably provide for a conclusion as to whether additional cautionary measures are necessary or not.

Factors that could affect the respective emission level present at the workplace involve the specification of the work area, the surrounding area, the duration of exposure, other noise sources etc.

You must also observe any divergences in national regulations with respect to the permissible workplace levels. The aforementioned information does, however, allow the user to better assess dangers and risks.

- Vibration level  $a_h$ : 0.8 m/s<sup>2</sup>
- Uncertainty  $K_{pA}$ : 1.5 m/s<sup>2</sup>

### WARNING!

The above-cited vibration emission level (vibration value) has been measured in accordance with a test method standardised in EN 50636-2-91:2014 and can be used to compare one power tool with another. It is also suited for preliminary estimation

of loading by vibration. The actual vibration emission value can, as described below, differ by type of application:

- Condition of the grass trimmer or proper maintenance,
- Type of material and use of the grass trimmer,
- Use of the right accessories and whether they are in good condition,
- A firm grip on the grass trimmer when it is in use,
- Proper use of the grass trimmer as described in this user manual.

Improper use of the grass trimmer can lead to physical ailments caused by vibration.

**WARNING!**

Depending on the type of use or conditions of use, the following safety measures must be taken to protect the user:

- Avoid exposure to vibrations as much as possible.
- Only use accessories in perfect working order.
- Wear vibration-damped gloves when using the grass trimmer.
- Follow this user manual on care and maintenance of the grass trimmer.
- Avoid using the grass trimmer at temperatures below 10°C.
- Plan your work steps so as not to use strongly vibrating grass trimmers over several consecutive days.

# Disposal

## Disposing of the packaging



Dispose of the packaging separated into single type materials.  
Dispose of paperboard and cardboard with waste paper and plastics with recyclable waste.

## Disposing of the grass trimmer

- Dispose of the grass trimmer in accordance with the regulations in your country.
- Note that the battery being used must be disposed of separately.  
Note the information included in the user manual for the battery being used.



### **Old devices must not be disposed of with household waste!**

This symbol indicates that this product must not be disposed of together with domestic waste in compliance with the Directive (2012/19/EU) pertaining to waste electrical and electronic equipment (WEEE). This product must be handed in at a collection point intended for the purpose. This can occur, for example, by handing it in at an authorised collecting point for the recycling of waste electrical and electronic equipment. Owing to potentially hazardous substances that are frequently contained in waste electronic equipment, incorrect handling of waste equipment may have a negative impact on the environment and on the health of human beings. By disposing of this product correctly, you are also contributing towards an efficient use of natural resources. Information on collecting points for waste equipment can be obtained from your municipal authorities, the public law disposal authorities, an authorised institution for the disposal of waste electrical and electronic equipment or the waste collection services.



Great care has gone into the manufacture of this product and it should therefore provide you with years of good service when used properly. In the event of product failure within its intended use over the course of the first 3 years after date of purchase, we will remedy the problem as quickly as possible once it has been brought to our attention. In the unlikely event of such an occurrence, or if you require any information about the product, please contact us via our helpline support services, details of which are to be found both in this manual and on the product itself.



**PRODUCED IN CHINA FOR:**

ALDI STORES LTD. PO BOX 26, ATHERSTONE  
WARWICKSHIRE, CV9 2SH.

---

ALDI STORES (IRELAND) LTD.  
PO BOX 726, NAAS, CO. KILDARE.  
Visit us at [www.aldi.com](http://www.aldi.com)

**AFTER SALES SUPPORT**

800322



**00800 34 99 67 53**



**[meister-service@conmetallmeister.de](mailto:meister-service@conmetallmeister.de)**

MODEL:

FAR 20-1a/WU5420333/WU5420334

04/2020

**3**  
**YEAR**  
**WARRANTY**